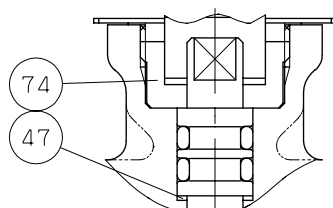
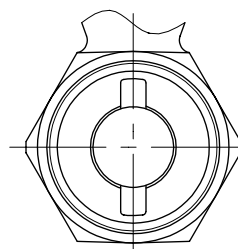


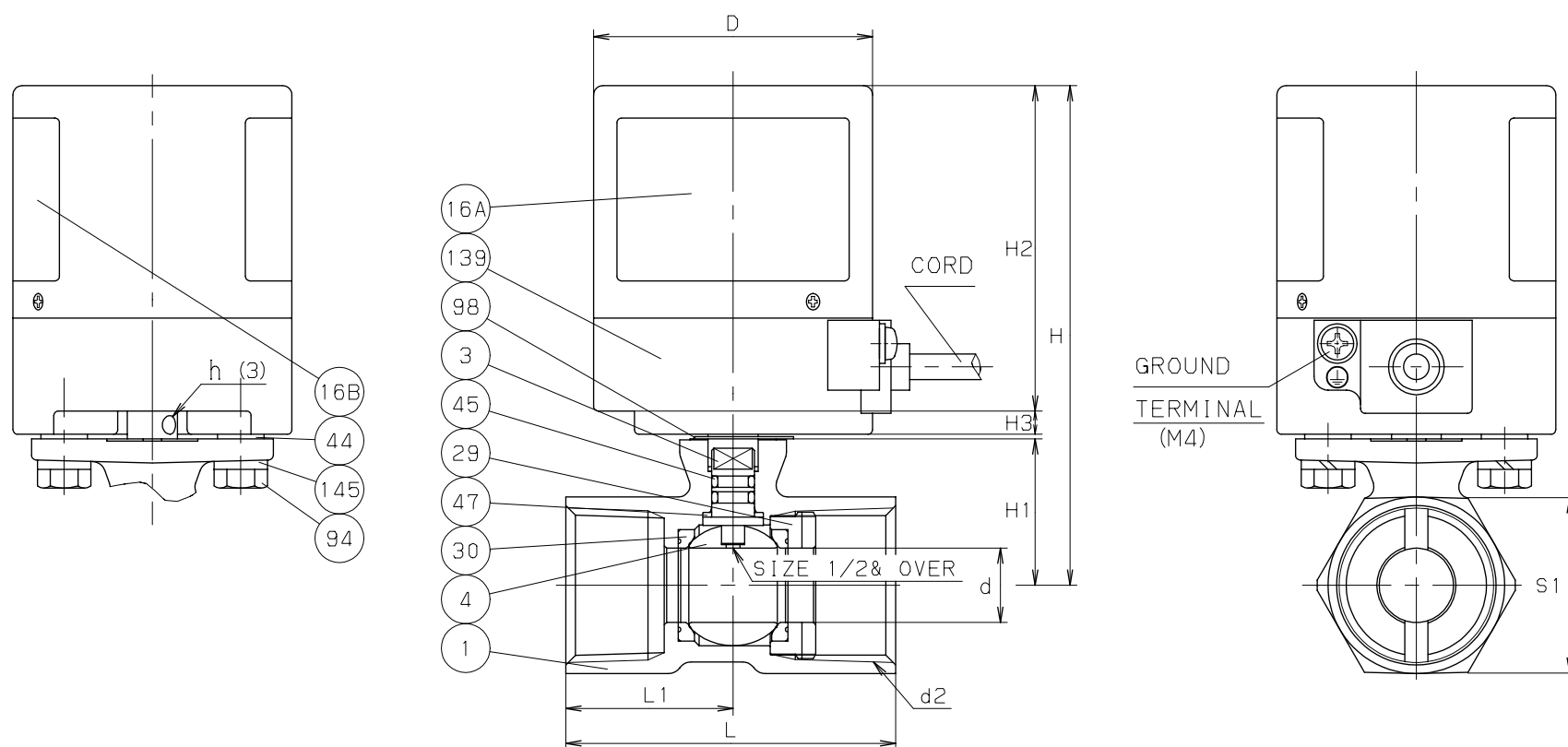
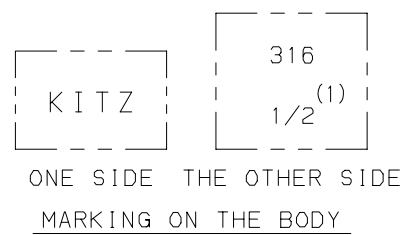
SIZE 3/8 ONLY



SIZE 1/4 ONLY



SIZE 3/4 & 1



DIMENSIONS

UNIT: mm

NOMINAL SIZE	d	d2	H	H1	L	L1	S1	KITZ-ELECTRIC ACTUATOR				TYPE
								H2	H3	D	h	
1/4	4.5	Rc 1/4	102	26	44	21	21	70	5	60	4	EA100/200-1
3/8	6.8	Rc 3/8	102	26	44	21	21					
1/2	9.2	Rc 1/2	102	26	56.5	27.5	25					
3/4	12.5	Rc 3/4	105	29	59	30	32					
1	16	Rc 1	108	32	71	36	38					EA100/200-1.5

NOTE (1) VALVE SIZE IDENTIFICATION.  
(2) Cr PLATING.  
(3) HOLE FOR MANUAL OPERATION.

NO	NAME OF PARTS	QTY	MATERIALS	SPECIFICATIONS
				JIS SPEC.
1	BODY	1	STAINLESS STEEL	SCS14A
3	STEM	1	STAINLESS STEEL	SUS316 (2)
4	BALL	1	STAINLESS STEEL	SUS316
16A	NAME PLATE	1		
16B	NAME PLATE	1		
29	INSERT	1	STAINLESS STEEL	SUS316
				(SIZE 1/4 - 1/2)
		1	STAINLESS STEEL	SCS14A
				(SIZE 3/4 & 1)
30	BALL SEAT	2	PTFE	
44	INSULATOR	2	G/F EPOXY	
45	O RING	2	FKM	
47	THRUST WASHER	1	REINFORCED PTFE	
74	BUSH	1	BRASS	C3771BE
				(SIZE 1/4 & 3/8)
94	BOLT	2	STAINLESS STEEL	SUS304
98	INDICATOR PLATE	1	ALUMINUM	
139	ELECTRIC ACTUATOR	1		
145	SPRING WASHER	2	STAINLESS STEEL	SUS304

TEST PRESSURE	SHELL		SEAT	
	HYDROSTATIC	2.06 MPa		MPa
AIR	MPa		0.59 MPa	

STANDARD	FACE TO FACE OR END TO END		KITZ STANDARD	
	END CONNECTION		JIS B0203	
	WALL THICKNESS		KITZ STANDARD	

FIGURE EA100/200-UTE

10K CAST STAINLESS STEEL BALL VALVES  
WITH KITZ-ELECTRIC ACTUATOR \*KELMO\*  
REDUCED BORE, SCREWED ENDS.

DATE APPD	FEB. 16' 06	DRAWING NO	△		
APPD BY	M. TAKUSAGAWA	965-F30043 REV-07	△		
CHKD BY	H. KARASAWA		△		
DSGND BY	Y. YOKOCHI		△		
DRAWD BY	K. AIKAWA		MARK	DATE	BY

KITZ CORPORATION

